

# ABRASION RESISTANT FITTINGS FOR PLASTICS INDUSTRY

## APPLICATION:

FLSmidth Abrasion Resistant Pipeline Fittings are designed to meet the stringent durability demands required when conveying abrasive polymer materials. FLSmidth has designed a diamond shape interior finish that has consistently proven its ability to resist abrasion and dramatically reduce development of fines and streamers.

FLSmidth Cast Aluminum Pipeline Fittings are ideally suited for pneumatic conveying systems handling plastic pelleted materials. Various configurations available to suit pipeline layout.

### Materials Typically Handled:

- PVC
- Polyethylene
- Polypropylene
- Nylon
- Polyester
- Vinyl Acetate



**Top:** FLSmidth Abrasion Resistant Fitting shows no wear after 2 years.

**Bottom:** Average fitting after 5 months shows patch from wear.

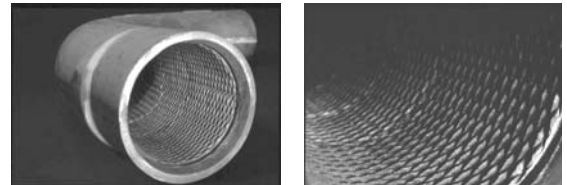
## SPECIFICATION:

Fittings are cast of either 356.0 - T6 or SR319.0 - T51 (75-85 BHN). Internal surfaces have a diamond pattern finish proven to reduce wear and streamers. Standard end styles are plain end for compression type reducing couplings, flanged (150 lb. std.) and Victaulic® groove ends available.

### Availability:

Sizes: 3", 4", 5", 6", 8", 10", 12"  
(75 mm, 100 mm, 125 mm, 150 mm, 200 mm, 250 mm, 300 mm)

Bend Angles: 90°, 60°, 45°, 30°



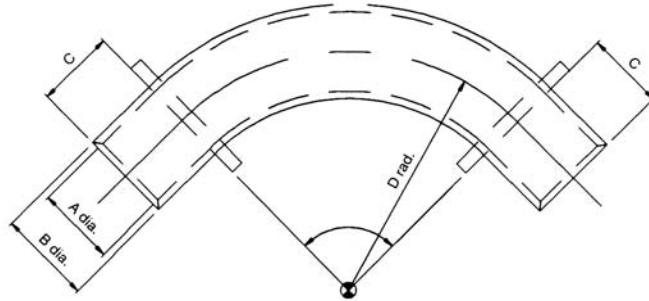
Cast Internal Diamond Finish

FEATURES	BENEFITS
<b>Cast Aluminum Construction</b>	<ul style="list-style-type: none"> <li>• Increased abrasion resistance due to material hardness yielding longer life and less maintenance</li> </ul>
<b>Symmetrical Design</b>	<ul style="list-style-type: none"> <li>• Permits reversibility for additional wear life</li> </ul>
<b>Cast Internal Diamond Finish</b>	<ul style="list-style-type: none"> <li>• Reduces fines and streamers and ensures complete cleanout</li> </ul>
<b>Cast Internal Bevel</b>	<ul style="list-style-type: none"> <li>• Allows match up of schedule 10 or 40 pipe</li> </ul>
<b>3D Bend Radius</b>	<ul style="list-style-type: none"> <li>• Reduces wear by limiting product impingement points</li> <li>• Low pressure drop</li> </ul>
<b>Choice of End Connection Plain, Flanged, Grooved</b>	<ul style="list-style-type: none"> <li>• To suit plant standards</li> </ul>

# ABRASION RESISTANT FITTINGS

## FLSmidth Abrasion Resistant Pipeline Fittings

Indicates available angles of bend. For dimensional specifications consult tables below.



Angle Θ	A Pipe Size In (mm)	B +/- 1/16 In (mm)	C In (mm)		D In (mm)	Weights Lb. (Kg)		PART NUMBER		
			PE/VE	FE		PE/VE	FE	Plain End (PE)	Victaulic® End (VE)	Flanged End (FE)
30	3 (75)	4 (100)	8 (205)	6 (150)	9 (230)	13 (6)	17 (7)	101-91-4-5588-01	101-93-4-5565-01	101-92-4-5523-01
	4 (100)	5 (125)	8 (205)	6 (150)	12 (305)	18 (8)	24 (11)	-02	-02	-02
	5 (125)	6 (150)	8 (205)	6 (150)	15 (380)	24 (11)	31 (14)	-03	-03	-03
	6 (150)	7 1/8 (180)	8 (205)	6 (150)	18 (460)	35 (16)	47 (21)	-04	-04	-04
	8 (200)	9 1/4 (235)	8 (205)	6 (150)	24 (610)	56 (25)	71 (32)	-05	-05	-05
	10 (250)	11 3/8 (290)	11 (280)	8 (205)	30 (760)	102 (46)	113 (51)	-06	-06	-06
	12 (300)	13 1/2 (343)	11 (280)	8 (205)	36 (915)	144 (65)	162 (74)	-07	-07	-07
45	3 (75)	4 (100)	8 (205)	6 (150)	9 (230)	14 (6)	18 (8)	101-91-4-5587-01	101-93-4-5566-01	101-92-4-5522-01
	4 (100)	5 (125)	8 (205)	6 (150)	12 (305)	22 (10)	28 (13)	-02	-02	-02
	5 (125)	6 (150)	8 (205)	6 (150)	15 (380)	28 (13)	35 (16)	-03	-03	-03
	6 (150)	7 1/8 (180)	8 (205)	6 (150)	18 (460)	41 (19)	53 (24)	-04	-04	-04
	8 (200)	9 1/4 (235)	8 (205)	6 (150)	24 (610)	70 (32)	85 (39)	-05	-05	-05
	10 (250)	11 3/8 (290)	11 (280)	8 (205)	30 (760)	122 (55)	133 (61)	-06	-06	-06
	12 (300)	13 1/2 (343)	11 (280)	8 (205)	36 (915)	142 (64)	160 (73)	-07	-07	-07
60	3 (75)	4 (100)	8 (205)	6 (150)	9 (230)	17 (8)	21 (10)	101-92-4-5507-01	101-93-4-5567-01	101-92-4-5521-01
	4 (100)	5 (125)	8 (205)	6 (150)	12 (305)	24 (11)	30 (14)	-02	-02	-02
	5 (125)	6 (150)	8 (205)	6 (150)	15 (380)	32 (15)	39 (18)	-03	-03	-03
	6 (150)	7 1/8 (180)	8 (205)	6 (150)	18 (460)	47 (21)	59 (27)	-04	-04	-04
	8 (200)	9 1/4 (235)	8 (205)	6 (150)	24 (610)	80 (36)	95 (43)	-05	-05	-05
	10 (250)	11 3/8 (290)	11 (280)	8 (205)	30 (760)	144 (65)	155 (71)	-06	-06	-06
	12 (300)	13 1/2 (343)	11 (280)	8 (205)	36 (915)	210 (95)	228 (104)	-07	-07	-07
90	3 (75)	4 (100)	6 (150)	6 (150)	9 (230)	17 (8)	26 (12)	101-91-4-5586-01	101-93-4-5568-01	101-92-4-5508-01
	4 (100)	5 (125)	6 (150)	6 (150)	12 (305)	25 (11)	34 (15)	-02	-02	-02
	5 (125)	6 (150)	6 (150)	6 (150)	15 (380)	36 (16)	46 (21)	-03	-03	-03
	6 (150)	7 1/8 (180)	6 (150)	6 (150)	18 (460)	55 (25)	71 (32)	-04	-04	-04
	8 (200)	9 1/4 (235)	6 (150)	6 (150)	24 (610)	98 (44)	120 (54)	-05	-05	-05
	10 (250)	11 3/8 (290)	8 (205)	8 (205)	30 (760)	170 (77)	195 (88)	-06	-06	-06
	12 (300)	13 1/2 (343)	8 (205)	8 (205)	36 (915)	254 (115)	290 (132)	-07	-07	-07

© Trademark  
Victaulic Corp. of America