

DISCHARGE VALVE SWING GATE

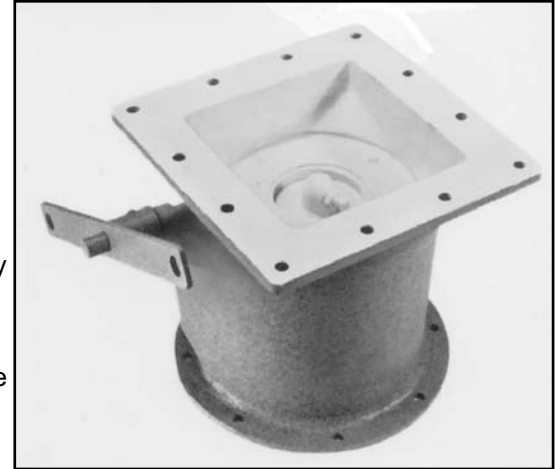
APPLICATION:

The FLSmith Swing Gate is simple, easy-to-install, air tight discharge valve commonly used with dust collection equipment when frequent clean-out is not required.

SPECIFICATION:

General

The FLSmith Swing Gate is a manually operated, self-locking discharge valve. in an open position it presents minimum obstruction to dust discharge flow. This gate features a post-center toggle locking device.



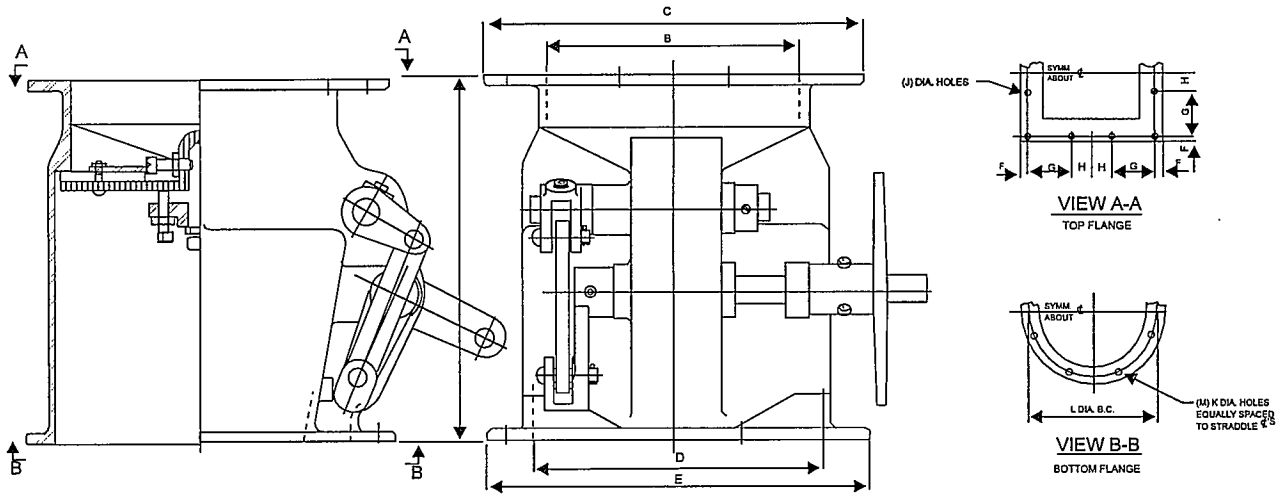
Body

The body is a single, cast iron unit that is designed to create an airtight seal with the swing-gate seal.

Gate

The Swing Gate is mechanically tensioned against the body valve seat using a gasket. Rubber gasket permits use up to 250° F (121° C). Special silicone seal gasket extends operating range up to 400° F (205° C).

ORDER DATA:



SIZE	HEIGHT	TOP FLANGE		BOTTOM FLANGE		DIMENSIONS (INCHES)							WT. (LBS.)
		INSIDE	OUTSIDE	INSIDE	OUTSIDE	F	G	H	J	K	L	M	
8"	10"	7" SQ.	10 1/2" SQ.	8" DIA.	10 1/2" DIA.	5/8"	3 1/8"	1 1/2"	12	7/16"	9 1/2"	8	60