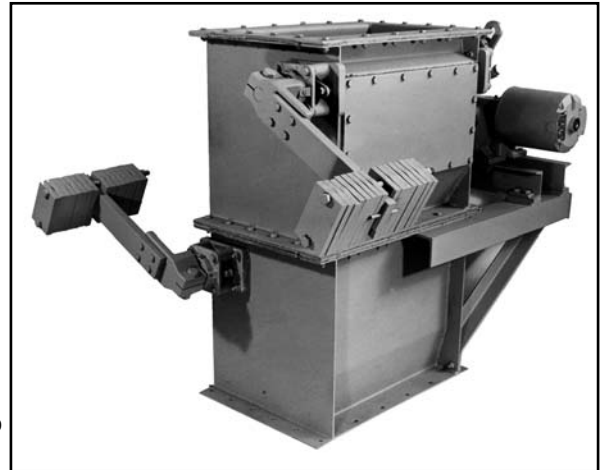


DISCHARGE VALVE TWO-GATE (MOTOR-OPERATED) VALVE

APPLICATION:

The FLSmidth Two-Gate Valve is a two-gate, non-jamming, power-opened, gravity-closed discharge valve driven by a gear motor. Commonly used with dust collection equipment feeding into mechanical conveying systems.



SPECIFICATION:

General

The FLSmidth Two-Gate Valve provides a dual-gate airlock seal against a differential pressure up to 17" W.G. and will withstand material temperatures up to 400° F (205° C). For material temperatures to 700° F (371° C), special motors and heat shields can be provided at extra cost.

Body

The valve body is constructed of seven (7) gauge fabricated steel plate. Inspection plate cover permits easy service access.

Gates

The FLSmidth Two-Gate Valve has two (2) sealing gates which alternately open and closes as material passes through the unit in order to maintain a seal between material inlet and outlet. The alternating cycle is mechanically operated using an eccentric and gear motor arrangement. Simple gravity release produces non-jamming return operation. Steel gates are mounted on a finished shaft rotating freely on outboard self-aligning ball bearings.

Motor Gear motors are TEFC, 3 phase, 230/460 Volt AC, 60 Hz.

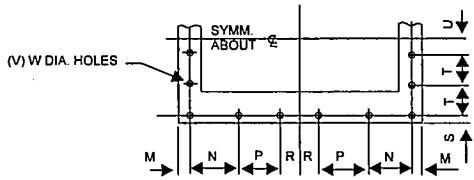
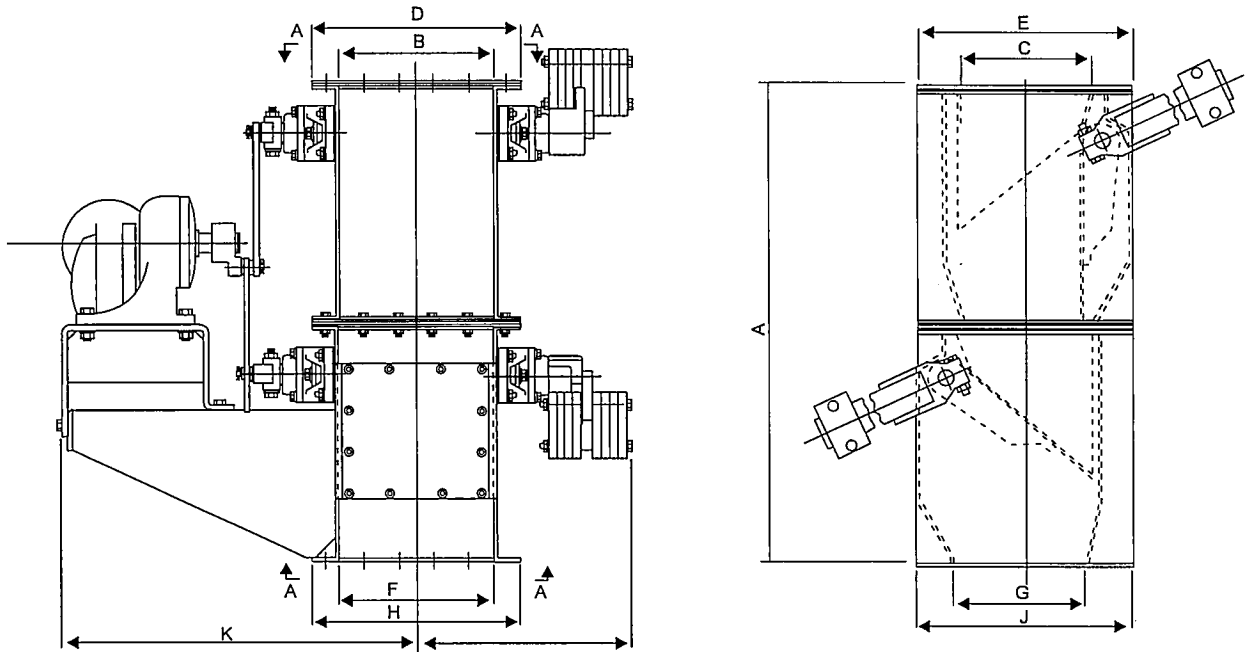
ORDER DATA:

Specify quantity, description, size and part number.

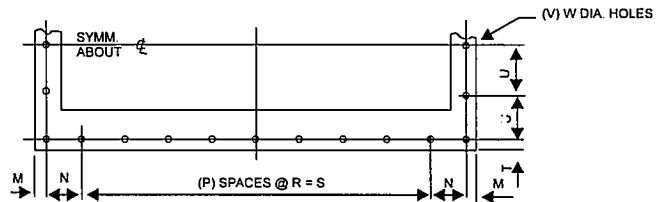
DESCRIPTION: TWO-GATE VALVE

Size (Inches)	CFM	Motor HP	Motor Operated Part No.	Gravity Operated P/N
9 x 9	5	1/2	305-72-5-0003-00	303-85-4-0330-00
9 x 17	9	1/2	305-74-4-0003-00	303-76-4-0313-00
9 x 17	14	1	305-70-5-0009-00	
12 x 36	33	3	305-73-4-0003-00	305-78-4-00-6-00

DISCHARGE VALVE TWO-GATE (MOTOR-OPERATED) VALVE



VIEW A-A
TOP & BOTTOM FLANGE
9x9 & 9x17 TWO-GATE VALVE



VIEW A-A
TOP & BOTTOM FLANGE
12x36 TWO-GATE VALVE

SIZE	CU. FT./ MIN CAPACITY	WT. (LBS.)	GEAR MTR. HP.	HEIGHT	TOP FLANGE		BOTTOM FLANGE				DIMENSIONS												
					INSIDE		OUTSIDE		INSIDE		OUTSIDE		K	L	M	N	P	R	S	T	U	V	W
					A	B	C	D	E	F	G	H	J										
9 X 9	5.5	500	1/2	3'-0 1/8"	11"	10"	16 1/4"	16 1/2"	12"	10"	16 1/4"	16 1/2"	2'-2 1/16"	16 1/2"	1 1/8"	5"	-	2"	3/4"	3"	1 1/2"	16	7/16"
9 X 17	14	620	1	3'-0 1/8"	19"	10"	2 1/4"	16 1/2"	20"	10"	2'-1/4"	16 1/2"	2'-6 1/16"	23"	1 1/8"	5"	4"	2"	3/4"	3"	1 1/2"	10	7/16"
9 X 17	9	550	1/2	3'-0 1/8"	19"	10"	2 1/4"	16 1/2"	20"	10"	2'-1/4"	16 1/2"	2'-6 1/16"	23"	1 1/8"	5"	4"	2"	3/4"	3"	1 1/2"	10	7/16"
12 X 36	30	2400	3	3'-0 1/8"	3'-1"	13"	3'-8"	21"	3'-3"	13"	3'-8"	21"	4'-4 1/4"	2'-5 7/16"	1	3 1/2"	8"	4 3/8"	2'-11"	1"	4 3/4"	18	7/16"

Dimensions in inches