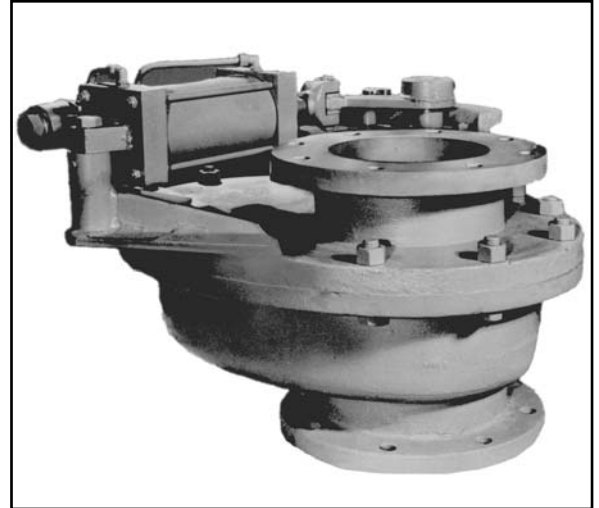


# CONVEYING LINE VALVE ONE-WAY CUTOFF

## TYPE SK

**APPLICATION:** FLSmidth Type SK One-Way Cutoff Valves are designed to provide a positive cut-off and seal for pressure and vacuum pneumatic conveying lines. The valves can be used at inlet and outlet locations on conveying pressure tanks. The cut-off valve can also be used on branched systems to permit selection for line activation or to prevent short-circuiting of a conveyor by stopping airflow through an unused section. Air cylinder operated for quick, responsive cut-off.



*One-way SK Cut-off Valve*

**SPECIFICATION:** **General**  
The FLSmidth Type SK One-Way Cutoff Valve is available in six basic sizes. The 3 through 6-inch (75 -150 mm) valves match the I.D. of standard Schedule 40 pipe. The 8 and 10-inch (200 and 250 mm) valves match the I.D. of standard Schedule 30 pipe. Operating temperature up to 400° F (205° C).

**Body**  
Durable machined cast iron construction.

**Disc**  
The valves employ replaceable hardened seats and discs, ground and lapped to ensure positive sealing. Air cylinder actuator provides fast and positive cutoff operation. 50 to 100 PSIG (3.5 to 7 Kg/cm<sup>2</sup>) clean plant air required.

**Accessories**  
Weather-proof (NEMA 4) limit switches are included for positive indication.

**Special Applications**  
High temperature 850° F (455° C), hand-operated, voltages.

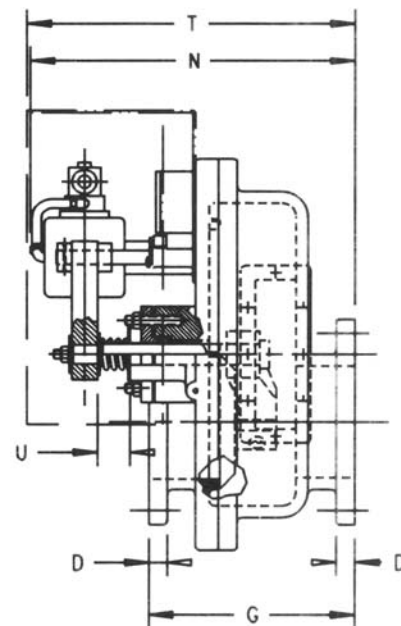
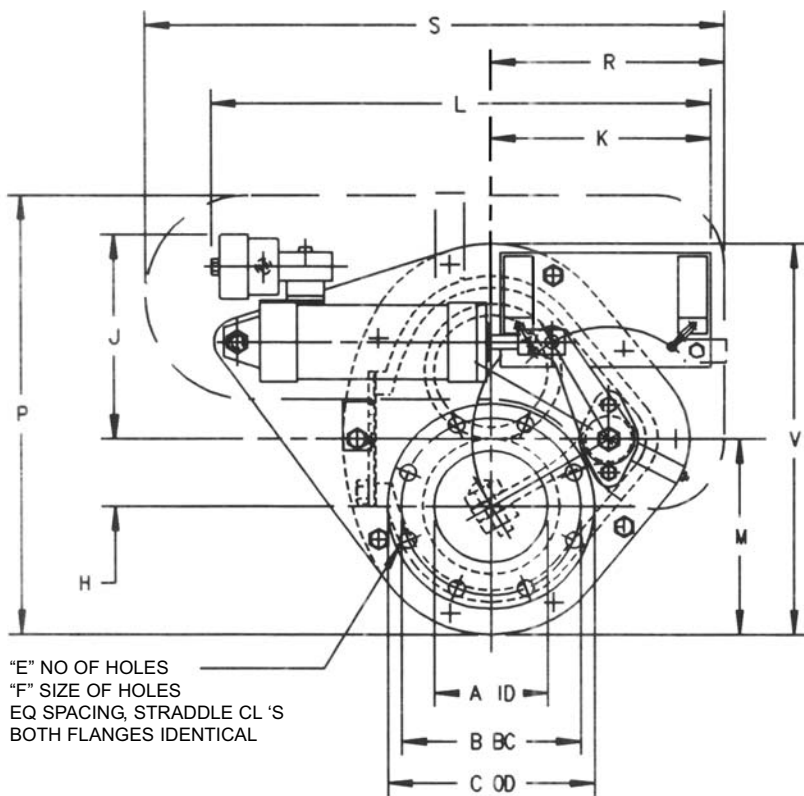
**ORDER DATA:** Specify quantity, description, size and part number.

**DESCRIPTION: TYPE ONE-WAY CUTOFF VALVE, air cylinder operated**

Size (inches)	Part Number with Guard	Weight (lbs.)
3	116-75-4-0901-01	180
4	116-75-4-0901-11	200
5	116-75-4-0901-21	275
9	116-75-4-0901-31	325
8	116-75-4-0901-41	510
10	116-75-4-0901-51	760
12	116-75-4-0901-53	1200

# CONVEYING LINE VALVE ONE-WAY CUTOFF

## TYPE "SK"



SIZE	A	B	C	D	E	F	G	H	J	K	L	M	N	P	R	S	T	U	V
3"	3"	6"	7 1/2"	1"	4"	3/4"	10"	2"	8 5/8"	8 5/8"	20 1/2"	6 5/8"	15 1/4"	17 1/4"	9 1/2"	2'-0"	15 3/4"	1 1/2"	13 1/4"
4"	4"	7 1/2"	9"	1"	8"	3/4"	10 1/2"	2 1/2"	10 5/8"	10 3/4"	22 1/2"	7 5/8"	15 5/8"	19 1/2"	11 5/8"	2'-2 3/8"	16 1/4"	1 1/2"	15 1/4"
5"	5"	8 1/2"	10"	1"	8"	7/8"	10 1/2"	3"	10 1/2"	10 1/2"	23 7/8"	9 1/8"	16 1/4"	21 3/8"	11 1/2"	2'-3 1/4"	16 3/4"	1 1/2"	18 1/4"
6"	6"	9 1/2"	11"	1"	8"	7/8"	11"	3 5/8"	11 5/8"	11 3/4"	2' 3"	10 1/2"	16 7/8"	23 5/8"	12 1/2"	2'-7"	17 1/2"	1 1/2"	21"
8"	8"	11 3/4"	13 1/2"	1"	8"	7/8"	14"	4 5/8"	11 5/8"	13 3/8"	2'-2 7/8"	13 1/8"	19 1/4"	2'-2 1/4"	14 1/4"	2'-6"	19 3/4"	1 1/2"	2'-2 1/4"
10"	10"	14 1/4"	16"	1 1/8"	12"	1"	17 3/4"	5 5/8"	13 7/8"	16 1/8"	2'-4 7/8"	15 3/8"	23 1/2"	2'-7 1/2"	18"	2'-9 1/4"	2'-0"	2"	2'-6 3/4"
12"	12 1/4"	17"	19"	1 1/4"	12"	1"	18 3/4"	6 7/8"	15 1/8"	18 3/8"	2'-7 3/4"	17 5/8"	24 3/8"	2'-11 1/4"	19 5/16"	3'-2 11/16"	2'-1 1/2"	2"	2'-11 1/4"