

FULLER-KINYON® TYPE M PUMP w/3 PC SCREW PARTS IDENTIFICATION

06-2017 FK M PUMP PARTS ID

ITEM	REQ	NAME OF PART
1	1	Hopper
2	1	Barrel
3	1	Side Discharge Housing
4	1	Bearing Housing Support-Drive End
5	1	Bearing Housing-Drive End
6	1	Bearing Retainer-Drive End
7	1	Bearing Housing Support-Disch End
8	1	Bearing Housing-Disch End
9	1	Bearing Retainer-Disch End
10	1	Discharge Body
11	1	Discharge Body Gasket
12	2	Hopper Cover
13	2	Hopper Cover Gasket
14	1	Discharge Body Cover
15	1	Discharge Body Cover Gasket
16	1	Lip Seal - Disch. Bearing
17	6	Lip Seal - Support Housing
18	1	O-Ring
19	1	Discharge Shaft
19-1	1	Wear Sleeve

ITEM	REQ	NAME OF PART
20	1	Screw
21	1	Barrel Bushing - Hard
22	1	Barrel Bushing - Soft
23	1	Drive Shaft
23-1	1	Wear Sleeve
23-2	1	Keystock
24	1	Lip Seal - Drive Bearing
25	1	Lip Seal - Drive Bearing
26	2	O-Ring
27	2	Bearing Sets
28	1	Screw Bushing - Discharge End
28-1	1	Lockwasher
28-2	1	Lock Nut
28-3	1	Thrust Washer

ITEM	REQ	NAME OF PART
29	1	Barrel Bushing
30	1	Screw Bushing Assy. - Drive End
30-1	1	LockWasher
30-2	1	LockNut
31	1	Flapper Valve Assembly
32	1	Blowout Lever
33	2	Grease Ring
34	1	Hex. Head Capscrew
35	1	Lockwasher
36	2	Counterweight
37	1	Hex. Nut
38		Soc. Setscrews
39	1	Blowout Handle

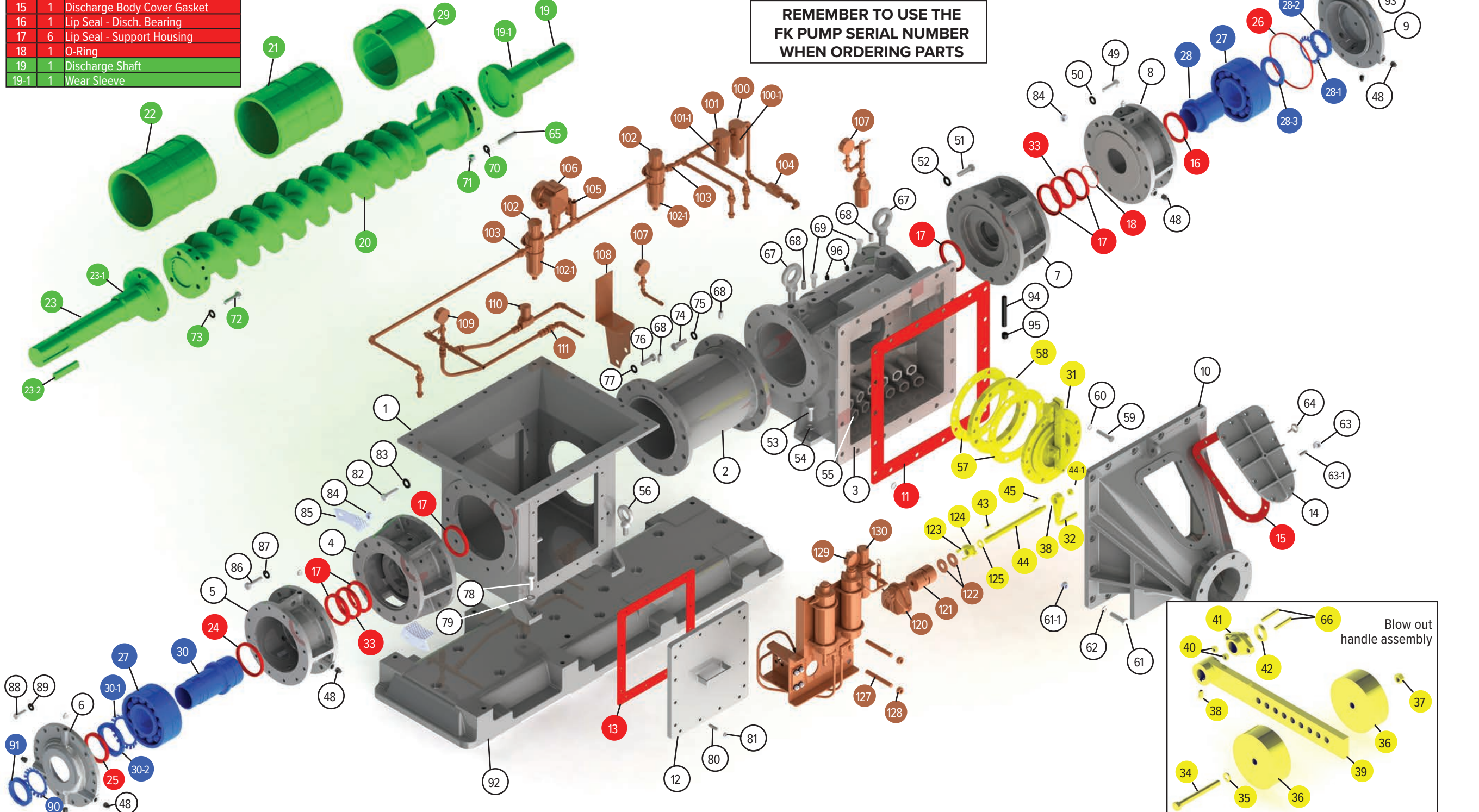
ITEM	REQ	NAME OF PART
40	2	Hex. Nut
41	1	Packing Gland
42	2	Packing
43	1	Key
44	1	Shaft for Blowout Lever Assy
44-1	1	Hex. Nut
45	1	Key
46		Hex. Head Capscrew
47		Lockwasher
48		Pipe Plug
49		Hex. Head Capscrew
50		Lockwasher
51		Hex. Head Capscrew

ITEM	REQ	NAME OF PART
52		Lockwasher
53		Hex. Head Capscrew
54		Lockwasher
55	13	Air Nozzle
56	2	Ring Bolt
57	2	Gasket
58	1	Spacer
59		Hex. Head Capscrew
60		Lockwasher
61		Hex. Head Capscrew
61-1		Hex. Nut
62		Lockwasher
63		Hex. Nut

ITEM	REQ	NAME OF PART
63-1		Stud
64	1	Eye Bolt
65	3	Stud - Special
66	2	Stud
67	2	Ring Bolt
68	4	Setscrews
69	2	Barrel Bushing Retainer Bolt
70	3	Lockwasher - Special
71	3	Hex. Nut - Special
72	3	Hex. Head Capscrew - Special
73	3	Lockwasher - Special

ITEM	REQ	NAME OF PART
74		Hex. Head Capscrew
75		Lockwasher
76		Hex. Head Capscrew
77		Lockwasher
78		Hex. Head Capscrew
79		Lockwasher
80	16	Stud
81	16	Hex. Nut
82		Hex. Head Capscrew
83		Lockwasher
84		Hex. Nut
85	1	Bearing Housing Support Guard
86		Hex. Head Capscrew
87		Lockwasher
88		Hex. Head Capscrew
89		Lockwasher
90	1	Bearing Lockwasher
91	1	Bearing Locknut
92		Base
93	7	Grease Fitting
94	1	Pipe Nipple
95	1	Cap Pipe Screwed
96		Pipe Plugs
100	1	Microaltescer Filter
100-1	1	Filter Element
101	1	Prefilter
101-1	1	Filter Element
102	2	Filter Regulator w/Gauge
102-1		Filter Element
103	2	Choke Plug
104	1	Check Valve
105	1	2-Way Solenoid Valve
106	1	Pressure Switch
107	2	Pressure Gauge
108	1	Mounting Bracket
109	1	Pressure Gauge
110	1	2-Way Solenoid Valve
111	1	Choke Plug
120	1	Actuator Rotary Pneumatic
121	1	Coupling, Flexible Jaw
122		Setscrew Collar / Washer
123	2	Screw
124	1	Seal Retainer
125	1	Rod Seal
127	2	Threaded Rod
128	8	Hex. Nut
129	1	Pressure Gauge
130	1	Air Filter / Regulator

REMEMBER TO USE THE FK PUMP SERIAL NUMBER WHEN ORDERING PARTS

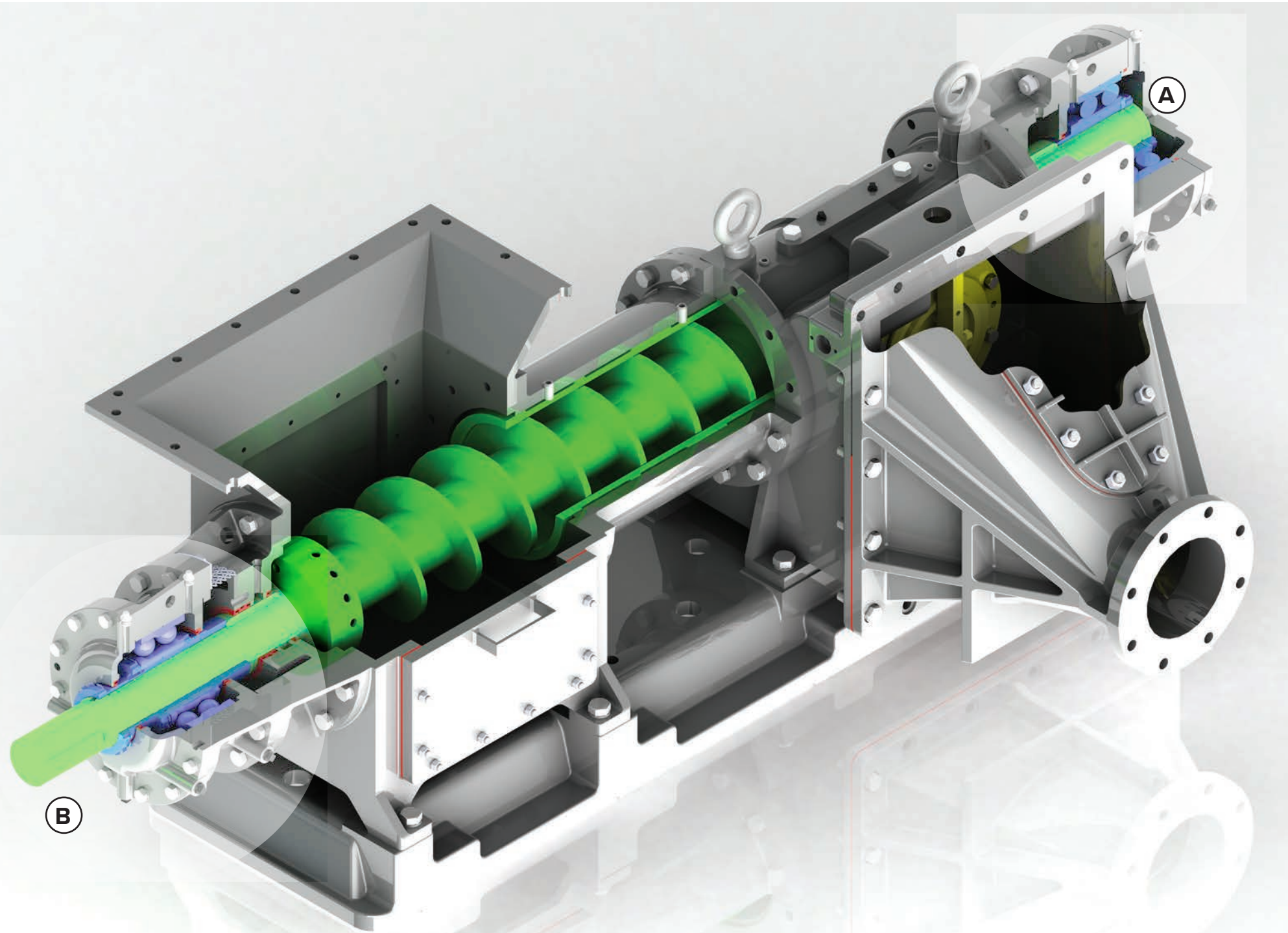


	Seals & Gaskets
	Screw & Barrel Bushing
	Bearings & Screw Bushings
	Flapper Valve
	Purge & Control Air

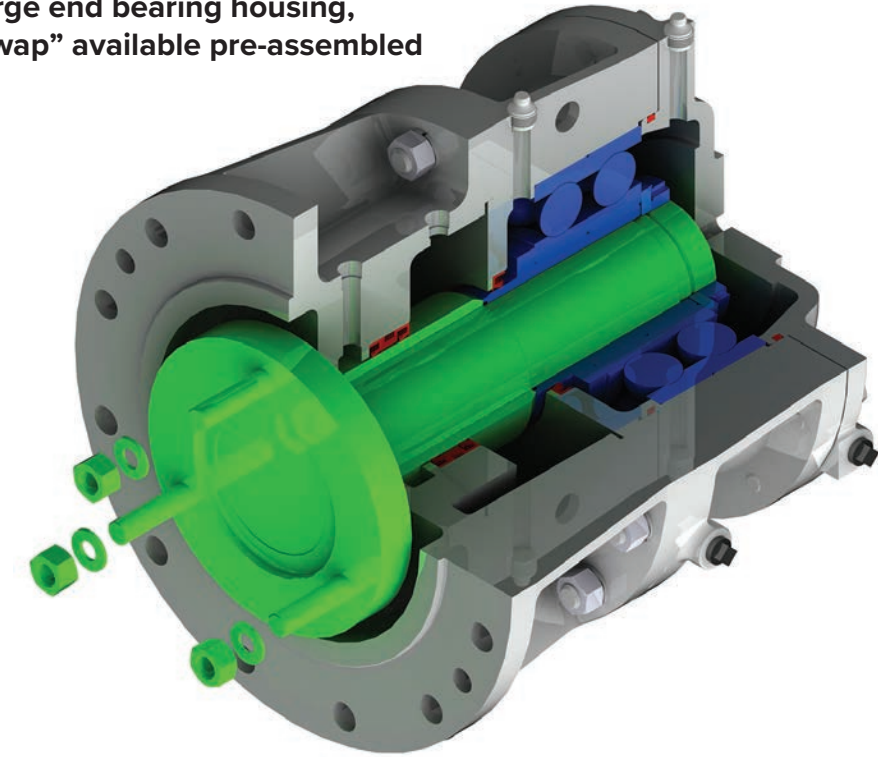


1610-264-6800 or 800-795-6825
 info-us@flsmidth.com
<http://www.conveyorspneumatic.com>

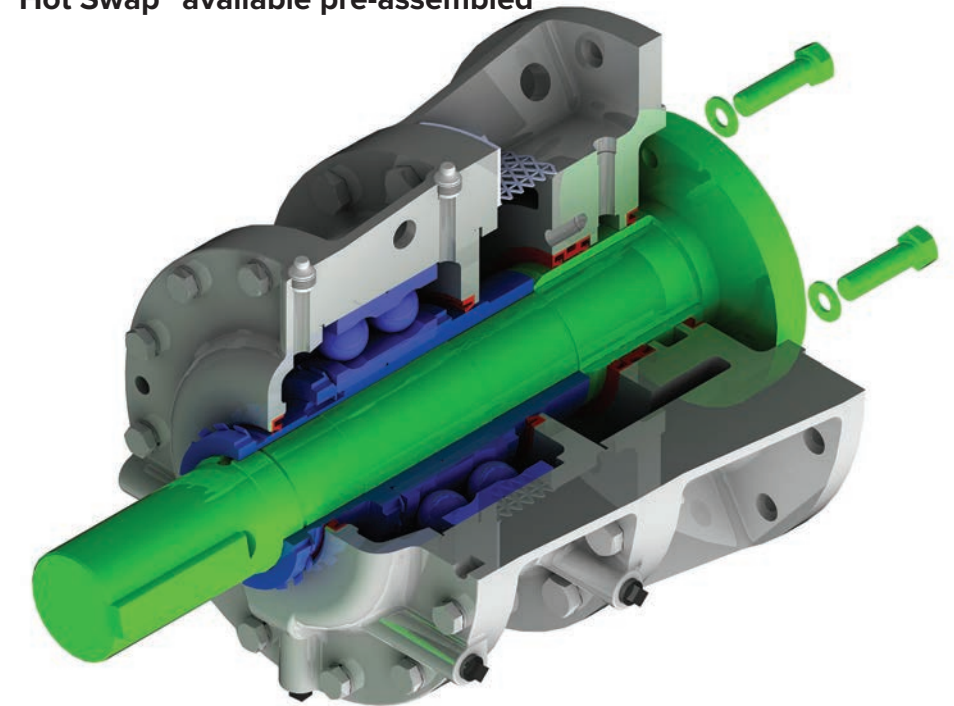
FULLER-KINYON® TYPE M PUMP w/3 PC SCREW - “HOT SWAP” BEARING ASSEMBLIES



A Discharge end bearing housing, “Hot Swap” available pre-assembled



B Drive end bearing housing “Hot Swap” available pre-assembled



Fuller-Kinyon® Pump 3-piece bearing housing exchange program - “Hot Swaps”

The “Hot Swap” is a fully-assembled FK Pump bearing housing for the 3-piece screw design. It comes installed with new seals, bushings, bearings, and is pre-lubricated.

Similar to FLSmidth’s compressor exchange program, the Hot Swap program exchanges worn 3-piece M pump bearing housing assemblies for new, warranted replacements. Ship your worn bearing assembly to one of our Service Centers. If an inspection reveals that its shaft, bearing housing, bearing support, and cover plate can be used again (many can be) for a future rebuild, there will be no upcharge for the good parts.

Quick delivery can also be made because large inventories of bearing housings maintained at FLSmidth’s Manheim plant and at our Certified Service Centers strategically located throughout the USA and Canada.

The cost of each hot swap is significantly less than buying the individual parts. The savings get even better when you factor in the reduced overall system downtime.

Maximize the benefits of the 3-piece screw in your Type M Fuller-Kinyon pumps by keeping Hot Swap bearing assemblies in your inventory. Having complete bearing assemblies readily available allows for immediate replacement and shortest possible downtime for your Fuller-Kinyon pump systems.

For more information call us at 610-264-6800, or toll-free at 800-795-6825.



1 610 264-6800 or 800-795-6825

info-us@flsmidth.com

<http://www.conveyorspneumatic.com>